



Cadolto Modulbau (德國)

Datasheet



- Founded in 1890
- 880 Mio. HK\$ revenue a year
- 50% of all projects are international (not in Germany)
- Over 700 worldwide healthcare projects
- Focused on modular construction for healthcare

Two production facilities in Germany



- Factory size with 100.000 m²
- Focused on healthcare projects
- All engineering facilities in one company
(planing, HVAC, structural analysis, electrical)

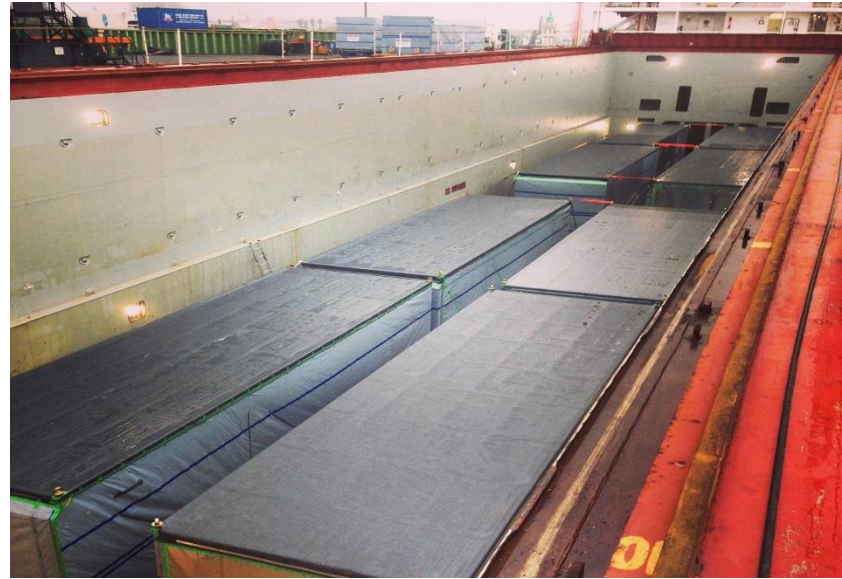
- 350 employees
- Subsidiary of Zech Group
- Sister company (Alpine
Mayreder Construction) in
Beijing



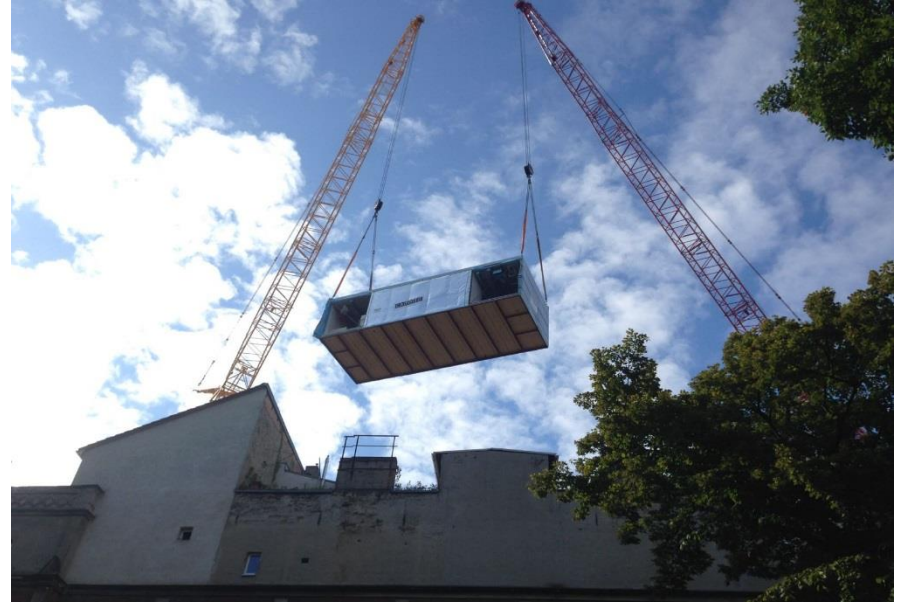




Transportation by searoute



Assembly at construction site



Reference project - OP



Hybrid Operational theatre at the University of Düsseldorf (杜塞爾多夫 Germany)

New construction including HVAC

- Rooms with very high hygiene requirements
- Dynamic shielded protection area attitude
- In cooperation with Philips Medical (for the supply of the medical equipment)
- Realised in 2016 within 5 months



Reference project in Augsburg (奧格斯堡) ,Germany



Datasheet

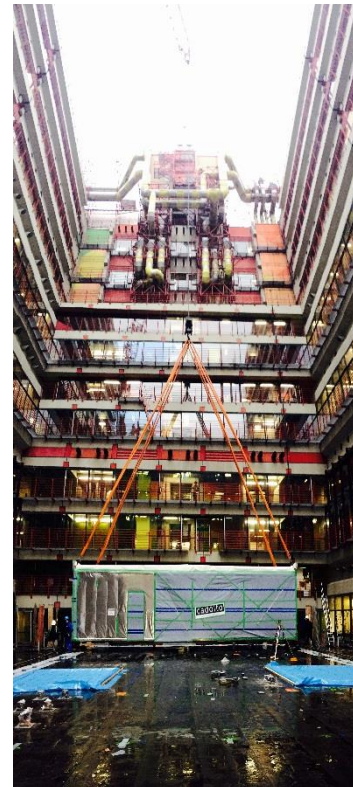
- 8.172 m² GFA (gross floor area), 5 floors
- 156 modules
- Realisation in 2017
- All engineering work (electrical, statics, construction, HVAC) done by Cadolto

Reference project - MRT

MRT building at the University of Aachen (亚琛)

New construction including HVAC

- High conditions on craning and logistics
- Two MRTs (3,0 Tesla and 1,5 Tesla)
- Shielding the radio frequency cabin



Laboratory building in Münster, Germany:



Datasheet New construction of a laboratory with Bio safety level 3

- 3.400 m² GFA gross floor area
- 38 modules
- Realisation in 2004



Over 700 realized healthcare projects within the last 30 years

